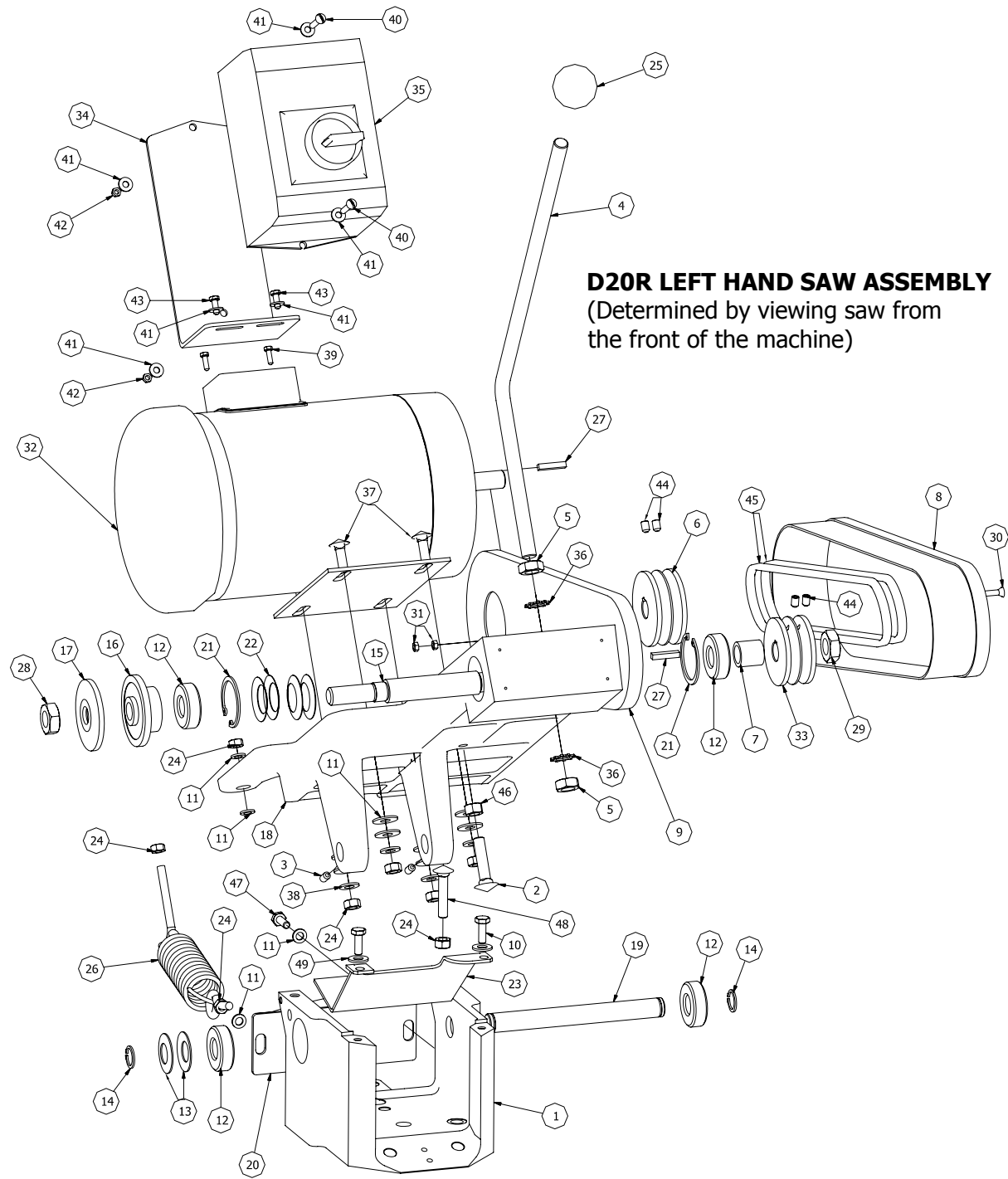


Parts List			
ITEM	QTY	PART NUMBER	DESCRIPTION
1	1	200DC21M	200S Pivot Bracket
2	1	3/8-16 x 1.5 Carriage Bolt	Down Stop Bolt
3	2	1/4-20 x 1/2 Set Screw	Arm/Pivot Lock
4	1	2BM18	Pull Down Handle
5	2	1/2-13 Hex Nut	Handle Lock Nut
6	1	2B4P24	Motor Pulley
7	1	2BM05	Spindle Spacer
8	1	2BF31R	Belt Guard Cover, Right
9	1	2BF29R	Belt Guard Backing Plate, Right
10	2	1/4-20 x 3/4 Hex Bolt	1/4-20 x 3/4 Hex Bolt
11	12	5/16 Washer	5/16 Washer
12	4	2B2P05	Spindle / Pivot Bearing
13	2	3B2P10	Pivot Belleville Spring
14	2	3B2P11	Pivot Snap Ring
15	1	2BM02R	200S Spindle, Right
16	1	200BM04	200S Slinger
17	1	200BM03	200S Flange
18	1	200BC01R	200S Arm, Right
19	1	3BM08	Pivot Shaft
20	1	200F45A	2" Dust Outlet
21	2	2B2P06	Snap Ring Spindle
22	4	2B2P07	Preload Belleville Spring Washer
23	1	200F22	Dust Deflector
24	8	5/16-20 Hex Nut	5/16-20 Hex Nut
25	1	2B7P17	Hand Knob, Handle
26	1	200B7P16E	Return Spring Assy.
27	2	2BM23	Pulley/Spindle/Motor Key
28	1	2B1P37	Spindle Nut, Left Thread
29	1	151P16R	Pulley Jam Nut, Right
30	1	10-32 x 2.5 Slotted Flat Head Mach. Screw	Belt Guard Bolt
31	2	10-32 Hex Nut	Belt Guard Lock Nuts
32	1	2B6S01	Motor 1 HP 1 Phase
33	1	2B4P23	Spindle Pulley
34	1	200BF96	Manual Overload Starter Bracket
35	1	Manual Overload Starter	Manual Overload starter
36	2	1/2 Tooth Lock Washer	Handle Lock Washer
37	4	5/16-18 x 3/4 Carriage Bolt	Motor Mount Bolt
38	4	5/16 SAE Washer	5/16 SAE Washer
39	2	10-32 x 1/2 Hex Bolt	10-32 x 1/2 Hex Bolt
40	2	10-32 x 3/4 Slotted Rd. Head Mach. Screw	10-32 x 3/4 Slotted Rd. Head Mach. Screw
41	6	10 Washer	10 Washer
42	2	10-32 Hex Nut	10-32 Hex Nut
43	2	10-32 x 1/2 Hex Bolt	10-32 x 1/2 Hex Bolt
44	4	1/4-20 x 3/8 Set Screw	1/4-20 Set Screw for Motor/Spindle Pulley
45	2	2B4P25	3V335 Drive Belt
46	1	3/8-16 Hex Nut	3/8-16 Hex Nut
47	1	5/16-18 x 1/2 Hex Bolt	5/16-18 x 1/2 Hex Bolt
48	1	5/16-18 x 1.5 Carriage Bolt	Up Stop Bolt
49	2	1/4 Washer	1/4 Washer



D20R LEFT HAND SAW ASSEMBLY
 (Determined by viewing saw from the front of the machine)